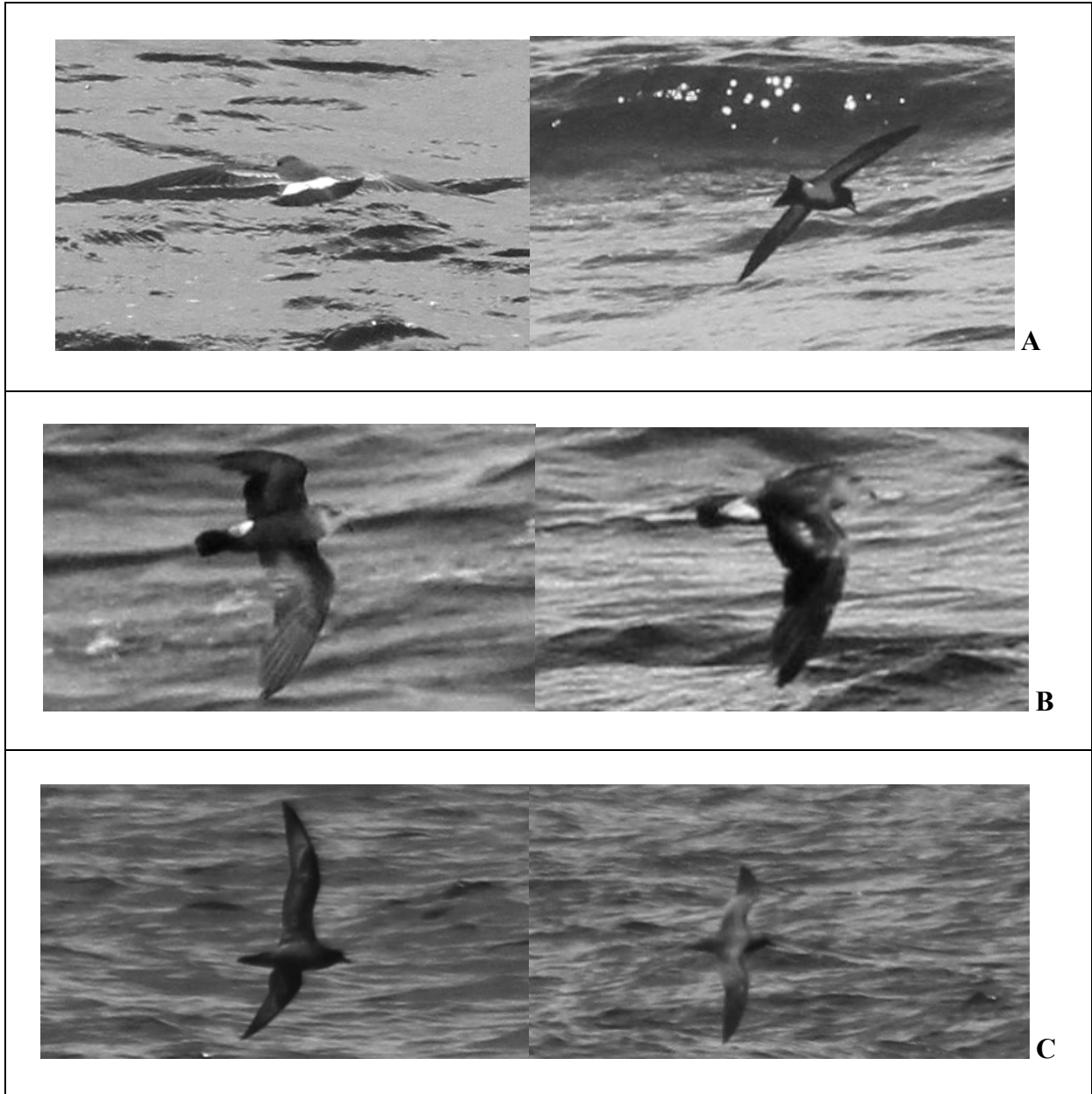


### Appendix 1

Pictures of Black-bellied Storm Petrel (A), Band-rumped Storm Petrel (B), and Sooty Shearwater (C) taken during OSL campaign over French Guiana EEZ in 2018. (Photos A and B taken by VR, photo B taken by PL.)



**Appendix 2**

Species identified during seabird published studies conducted offshore French Guiana, Suriname and North Brazil<sup>a</sup>

Reference	Mannocci <i>et al.</i> 2013	Martinez <i>et al.</i> 2019	Daudt <i>et al.</i> 2019	de Boer <i>et al.</i> 2014	Willems <i>et al.</i> 2017	
Studied habitat	All EEZ	Upper slope	Shelf & Slope	Lower slope	Shelf	Upper slope
Studied region	French Guiana		Northern Brazil	Suriname		
Units	% of groups (individuals)		% of individuals	% of days with species record		
<b>Laridae</b>						
<b>Laughing Gull</b>			12	3	27	
<b>Royal Tern</b>			3			
Least Tern					4	
<b>Sooty Tern</b>	31 (52)		12	60	7	26
<b>Common Tern</b>		16 (16)	18		3	4
Large-billed Tern			7			
<b>Stercorariidae</b>						
Pomarine Jaeger		6 (5)		41	4	14
Long-tailed Jaeger						4
Great Skua						
South Polar Skua						5
<b>Phaethontidae</b>						
Red-billed Tropicbird				25		13
<b>Oceanitidae</b>						
<b>Wilson's Storm Petrel</b>			5	6		
<b>Hydrobatidae</b>						
<b>Leach's Storm Petrel</b>			4	15	3	5
<b>Procellariidae</b>						
Cory's Shearwater		8 (7)		45		8
<b>Great Shearwater</b>			3	73	10	20
<b>Manx Shearwater</b>		3 (2)	12			3
<b>Audubon's Shearwater</b>				30		9
Bulwer's Petrel						4
<b>Fregatidae</b>						
<b>Magnificent Frigatebird</b>	20 (10)	26 (30)	4	6	47	4
<b>Sulidae</b>						
<b>Masked Booby</b>					10	10
Red-footed Booby						5
Brown booby				3	9	4

<sup>a</sup> Only species with frequencies  $\geq 3$  are presented. Species in bold are species most frequently recorded in our study.